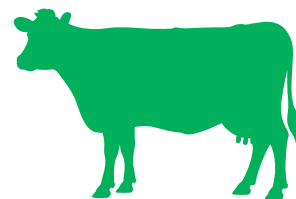
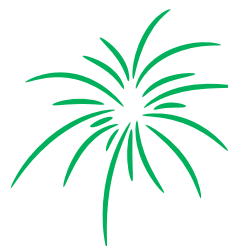
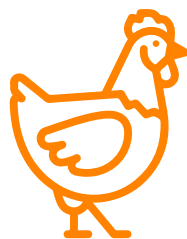




Alice Springs Show

RULES AND REGULATIONS

Friday 3rd & Saturday 4th July 2026
Blatherskite Park



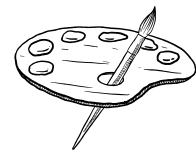
General Rules & Regulations

- Prize cards are not issued to every entry.
- 1st, 2nd & 3rd prizes will not necessarily be awarded in each class.
- Late entries will NOT be accepted. At Stewards discretion, they may be accepted for display purposes only.
- Entries are identified for judging & display solely by entry number. Any other form of identification will be removed by the steward.
- Highly perishable exhibits may be removed at any time deemed necessary by the Steward/s.
- Entries from previous years/ shows are not eligible to enter again unless they have undertaken at least a 50% change.
- The Central Australian Show Society does not take responsibility for damaged, lost, stolen or misplaced items or goods.
- If the entrant does not follow the above outlined rules and regulations, they may be subject to disqualification.
- No items to be advertised for sale.
- Entries may be moved to another class when deemed appropriate by the steward or judge.

Agriculture

- In classes of collections, exhibitors must supply their own equipment, bowls or plates for display. Artistic arrangements as well as quality will be considered when judging.
- Fruit and vegetables will be judged from the home garden angle rather than from a commercial agricultural or fruit growing angle.
- Citrus fruit should have the stalks removed, with only the 'star' remaining.
- Eggs shall be displayed in egg cartons.
- Farm Produce collection must consist of vegetables, fruit, eggs & dairy product
- Ensure that the correct number of items specified in each class are delivered, otherwise the entry will be disqualified.

Art

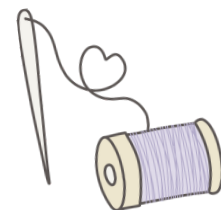


- Senior entries open to students & amateur artists. NO PROFESSIONALS.
- No individual entry to exceed **50cm** in any of its dimensions.
- Maximum size for Group entries is 2m wide and 1m high.
- Senior entries may be framed or mounted but must have appropriate hanging attachments (eg Wire)
- Junior entries: cannot be framed due to display space | restricted to one entry per person per class.
- Late entries will not be judged, and may be displayed only if space permits.
- **Write the competitor's name and entry class clearly on the back of each artwork.**
- For junior entries, include the entrant's age as of 30 June 2026.
- The Steward and/ or judge reserves the right to transfer any exhibit to a more appropriate class or division.
- All drawings and paintings must be unframed on thin card for hanging to protect from pins.

Cooking

- No more than 2 entries per class is permitted.
- Juniors may enter in senior section.
- Sponsors may enter their respective sections.
- Packet mixtures may not be used for any sections.
- Preserves should be **labelled with the name of the preserve and date of making as well as the entry number.**
- Jar size approx. 250ml. Lids should be easily removed.
- All food items – need to be covered when bringing out to the show grounds.
- All items to be displayed on covered thick cardboard, ceramic dinner or display plate. No plastic or paper plates.
- Please be mindful of the plate size due to limited space in the display cases. The steward may re-plate entries should the presentation impact on space limitations.
- Plates or boards to be collected on Sunday after the Show. Please put your name underneath for identification upon collection.

Craft



- Entries from previous years are not eligible to be entered again.
- Due to limited space no competitor may enter more than two works in any one class.
- No work may be entered in more than one class.
- The right is reserved for the steward or judge to transfer any work to the correct class or section at their discretion.
- No article will be accepted for display only.
- Exhibits must be solely the work of the individual
- All articles to be judged on workmanship 70%, style and suitability 20%, colour and materials 10%, unless otherwise stated.
- All exhibits must have some form of identification on them. Eg. Initials on pottery or wood; small cloth patch or tape with name attached (sewn unobtrusively) on fibre, fabric, knitting, quilts, etc. And name printed on the back of framed works.
- To avoid confusion when dropping off and picking up of your entry, please give details of your article so that we can find it fast for you e.g. "a framed picture of a cow, with flowers" or "a quilt with butterflies on it and a floral design on the back of it."

Hobbies

- Exhibitors may enter two exhibits per class.
- The steward and/or judge reserves the right to transfer any exhibit to a more appropriate class or division.
- Collections must be a minimum of 10 items, no max limit but must be able to fit in the display cabinet.
- All exhibits must be marked with competitor's name, concealed where possible with reasonable allowances for other entries.
- The theme is 'Beyond the Gate'.
- No exhibits may be collected prior to the advertised times unless under exceptional circumstances where consultation with the steward will be necessary.
- All entries should not exceed the maximum of 40cm wide, 40cm long and 40cm high.
- Entries larger run the risk of not being accepted.
- Judging to commence Sunday after drop-offs.
- Any exhibit completed by two or more entrants must be entered in the group entry classes.
- Group entry classes are open to any project created by a team, and can be made from any hobby category within that age group. For example, group Lego project, a group recycled project etc. Group entries must still be inside the size requirements above.

Horticulture

- Where measurements are given, height to be measured from base of container to apex of arrangement.
- Each exhibitor's items to be listed on one form. Junior entries on a separate form.
- Flowers, whether native or cultivated varieties, exhibited in cut flower classes must have been grown by exhibitor.
- All entries must be of horticultural materials. In arrangement sections, flowers need not be locally grown.
- Plants exhibited in container classes must have been in exhibitor's possession for at least 6 months.
- Definitions
 - Bloom - one flower displayed on a single stem.
 - Cut - Two or more flowers / florets displayed on a single stem or stem with secondary branches.
 - Bowl - a receptacle, the diameter of which is greater than its height.
 - Vase - a container, the height of which is greater than the diameter of its circular opening.
 - Container - a receptacle or holder of any shape or design, in which plant material is arranged.

Pet & Animal Nursery

- Depending on the availability of cages, pet owners will be contacted if they are required to provide their own cage.
- All cages shall be large enough to allow free movement of the animals for feeding and exercise. The steward reserves the right to eject any exhibit on the basis of disease, poor condition of animals, or unsatisfactory condition of the cage and its provision for watering, feeding, sanitation or as otherwise deemed by the steward to be against the best interests of the animal or CASS.
- Water containers and food must be provided by the exhibitors where necessary.
- All entries exhibited at owner's risk.
- The Pet and Animal Nursery is positioned on Fourth Avenue, behind the CASS Office.

Dachshund

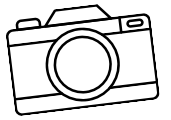
- Junior - handler is 15 years and under
- Open - Open to all age handlers
- All dogs must remain on a leash unless competing in the Dachshund Dash events.
- One gate 4 pass will be allocated per exhibiting family to allow for ease of entry/ exit.
- \$10 fee to be paid by Tuesday 1st July, Gate 4 pass issued upon payment.
- Egg & Spoon Race - Hold egg & Spoon in one hand, and dog leash in the other
- Fancy Dress - Both dog and handler must be dressed up
- Ill treatment of animals at any time on the Show Grounds shall result in disqualification from further competition. The chief steward or judge may at any time disqualify or suspend a dachshund or handler who in their opinion is either unsafe / unsound, ill-behaved, or who does not comply with the steward's or judge's instructions.

Dachshund Dash

- 1 handler at start, and 1 at finish line.

Handlers must not interfere with dachshunds in any way - ie treats, whistles, toys or reaching across the finish line.

Photography



- All photographs must be mounted on black card – Black borders must be between 1–5cm.
- **Up to 3 photos may be submitted per class, per entrant.**
- A photo can only be entered in one class at the time.
- Photos previously exhibited at the Alice Springs Show are not eligible for entry.
- The longest side of the photo **must not exceed 30cm. (max 35cm with black borders)**
- Please ensure your photos are mounted & secured properly. No responsibility will be taken for damage to photographs.
- Judging may begin as soon as Drop-Off has finished on the Sunday before the Show. Entries dropped off after 12pm may not be judged.

Definitions

- Juniors: Under 18. Juniors are not restricted to junior classes and can enter photos in the Beginner and Open classes as well.
- Juniors using school lab equipment must enter in the school entries category.
- Beginners: Persons (any age) who have not previously won any photography prize in any competition. Beginners are not restricted to beginner classes and can enter photos in the Open classes as well
- Professionals must enter in the professional category
- Wildlife: Photos depicting living, untamed animals in their habitat.
- Australian Wildlife: E.g. Kangaroos, emus, koalas. Photos of introduced and/or wildlife not unique to Australia are also accepted if the photo also highlights a uniquely Australian habitat.
- Flora & Fungi: Flora refers to all plant life – this includes trees, mosses, algae, flowers, seeds, etc. While fungi refer to mushrooms, yeasts and moulds.
- Twilight & Night: When the sun is below the horizon, after sunset and before sunrise.
- People: Candid photos or formal portraits of a person or multiple persons where the person(s) must be the primary subject.
- Scapes: Landscapes, waterscapes, cityscapes.
- Travel: Photos of uniquely foreign subjects; e.g. Architecture, vehicles, places, scapes, people.
- Central Australian Events: The Alice Springs Show, Finke Desert Race, Henley on Todd, Beanie Festival, etc.
- Central Australia: South of Three Ways (NT), north of Coober Pedy (SA), east of Warburton (WA) and west of Birdsville (QLD).
- Macro: Extreme close-up photos, usually of tiny subjects (e.g. Insects, flowers, seeds). Photos taken from further away with a telephoto lens are not macro photos.
- Creative/Experimental: Photos that display a novel effect because of an unusual combination of objects or an unusual viewpoint. Also, photos which have been modified during or after exposure (e.g. Digital manipulation).
- Open: Anything that does not fit in the other classes.

Cattle



- All entries must be submitted online via www.alicespringsshow.com.au – You will receive an invoice for payment please ensure this is paid by 4pm Friday 28th June 2024. Late entries will not be accepted.
- Cattle can be delivered between 8am and 5pm on the Monday and Tuesday prior to the show, BUT prior arrangement must be made with the steward. Any cattle delivered before Wednesday may require the exhibitor to transfer NLIS devices themselves. All cattle must be placed under supervision of the steward BEFORE 4pm Wednesday before the Show. Please make sure that the PIC is supplied with your entry.
- To resolve a dispute cattle may be mouthed to determine dentition on non-stud cattle.
- It is the exhibitors responsibility to check their entries with the steward before 4pm Wednesday, of Show week. All cattle are required to be ready for judging at the allocated time or they will face disqualification.
- Interstate cattle must be eligible for registration with the appropriate society.
- Cattle ARE NOT to be removed from the yards until Sunday 5th of July 2026 cattle removed will forfeit all cash prizes, trophies, and show results.
- All yards are to be left clean on the day of departure; this includes putting water bins away!
- Email CBBA Cattle secretary cattlesecretary.cbba@gmail.com for assistance nominating.
- All cattle are required to be ready for judging at allocated time or they may face disqualification.
- Interstate cattle must be eligible for registration with appropriate society.
- All yards are to be kept clean for the duration of the Show event and left clean on day of departure.
- Cattle in age specific classes are to be mouthed.

Movement conditions:

- All NT livestock arriving at Blatherskite Park for the Show must be accompanied by a NT Waybill be identified with an appropriate NLIS device and if being sold at the stud sale, National Vendor Declaration (NVD) and National Cattle Health Declarations forms.
- All Interstate Livestock arriving at Blatherskite Park for the show must be accompanied by a National Health Certificate, be identified with an appropriate NLIS device and, a National Vendor Declaration (NVD).
- The NT Waybill, National Health certificate and National Vendor Declaration forms, must be presented to the steward on arrival or at the earliest time possible the next day. These forms need to be travelling with the livestock.
- In the event that the cattle are not being accompanied or transported by the owner, the owner must advise the CBBA steward of their nominated representative.
- The cattle steward will be responsible for the scanning of the RFID devices and notifying the NLIS database of the movement details.
- All livestock leaving the show grounds must have a NT waybill issued from the duty agent before departure.
- Blatherskite Park has its own waybill for this use kept in the CBBA secretary office.
- All due care will be taken by the CBBA and its duty agents for handling of the cattle whilst at the park. If deemed necessary the CBBA will call a vet on behalf of the livestock owner if they are uncontactable, and fees will be passed on to the owner.

Cattle continued

CLASSES E1 TO E25 - Led Section - All cattle must be Led and are open to all breeds.

- Steward may request an exhibitor to release any animal not leading to a reasonable standard.
- All led bulls showing more than temporary incisors are to be led with a halter and nose ring or clip.
- 1st, 2nd and 3rd ribbons will be awarded in each individual class, provided by CASS.
- 1st place winners of each breed and sex class section are eligible for Breed Champion judging, sash provided by CASS.
- Breed Champions are eligible for Supreme Champion judging - sash provided by CASS.
- Any class with large numbers of exhibitors may be split at the discretion of the steward.
- Cattle entered in Classes E1-E25 (Led Section, excluding Classes EJ1 & EJ2) can be a single animal from a pen of 2 from the E26-E36(Pen Section).
- All cattle entering in the Grand Parade must be ready and assembled at the northern end of the Bill Prior yards on Friday 1st of July by 2:25pm. The cattle steward has the discretionary power to disallow any livestock from participating in the Grand Parade. Should an exhibitor have concerns regarding their beast in the Grand Parade they should notify the steward prior to the event; an exemption may be provided.

CLASSES E26 - E36 - Pen Section

- Commercial and Interstate Bred Bulls.
- A maximum of 3 entries per class per exhibitor.
- Bulls must be off grain for a minimum of 8 weeks prior to the show.
- CLASSES E26 to E36- Pen Section - NT & SA Border district bred
- Only NT and SA Bred Border district cattle shall be eligible for entry.
- All cattle to be presented as a pen of two. Open to ALL breeds.
- Cattle to be available for commercial display Thursday, 2nd July 2026, 3pm to 3:30pm for judging.
- Entries in Classes E35-E38 are eligible for the Centenary Cup Perpetual Trophy donated by CASS.
- 1st, 2nd, and 3rd ribbons will be awarded in each individual class, provided by CASS.
- Champions will be taken from the 1st place winners of each class (as outlined), sash provided by CASS.

SHOW BULL SALE - Bulls Auction will be in the hands of the 2026 Duty Agents.

- For Interstate Stud Bulls to be eligible for sale, two or less bulls must all be led. For over two head, one out of every three must be led.
- Local Bulls must be exhibited in either a led or unled section of the show to be eligible for sale.
- Interstate Commercial Bulls must be exhibited in either led or unled sections of the show to be eligible for sale.
- Vendor declarations need to be with the duty agents prior to the Bull sale.

Beef Jerky

Please see separate Beef jerky guidelines and form.

Poultry



- Food, water containers and cages are provided.
- Entries entered in the wrong class cannot be judged. Assistance with class identification may be obtained by contact with the steward, however final responsibility rests with the exhibitor, no responsibility will be accepted for incorrect entries.
- The steward reserves the right to reject or remove exhibits, based on their own opinion or on veterinary advice, which are suspected of being diseased or ill.
- All exhibits must be individually inspected by the stewards prior to being entered in the cages, no bird may be removed without a steward in attendance.
- An exhibit can only be entered in one class.
- Exhibitors will be permitted to be present at the time of judging at the discretion of the judge.
- Judging will commence at 9am on Thursday, 3rd July 2025.
- All exhibits shall be entered at own risk.
- Sale of birds is permitted. A "for sale" notice with the name, contact of the seller and the price on a plain, white piece of cardboard can be placed on the cage any time after judging. Onus for all arrangement's rests with the seller and no responsibility shall be accepted by CASS.
- A limited number of day-old chickens will be available for sale at the Show.
- Birds must have been owned by exhibitor for at least 2 months.
- Any breach of the Show Society Rules or Regulations or any of the above, shall result in immediate disqualification and forfeiture of awards, money, and possible prohibition from future exhibiting.
- No late entries accepted.
- Birds not delivered during delivery times will not be judged.

Definitions

- AORC – Any other recognised colour.
- AORV – Any other recognised variety.

Equestrian

- Competition will be run under EA rules. Rules available online at www.equestrian.org.au.
- Depending on number of entries, some Junior classes may be held prior to Show Days.
- Competitors must ride to the order of the draw or forfeit their entry.
- Timed draw will be available by contacting the above coordinators.
- Please advise the steward of any scratching, prior to start of competition.
- Riders must abide by dress and saddlery rules.
- Horses may only enter in two consecutive levels, e.g. Prep/Prelim.
- No late entries will be accepted.
- Tests may be called in accordance with EA rules.
- Riders wishing to ride HC must indicate this on the entry form.
- Only horse/rider combination competing may use the warmup areas during the dressage competition.
- No lunging in the warmup area is permitted.
- Any appeals must be submitted in writing to the chief steward within one hour of the event along with a \$50 fee. These will then be handed on to the board of appeals committee whose decision will be final.
- Warm up area is restricted to riders competing in the current or immediately upcoming event. This includes the warmup show jumps and the dressage area.
- Ill treatment of horses at any time on the Show Grounds shall result in disqualification from further competition. The chief steward or judge may at any time disqualify or suspend a horse or rider who in their opinion is either unsafe / unsound, ill-behaved, or who does not comply with the steward's or judge's instructions. Please also ensure that you take care when passing through the car park and warm up areas. Parking in area adjacent to the dressage area is reserved for floats. Junior Riders are under 18 years at the time of entry.

Main Oval Notice

- Due to safety and insurance reasons, no spectators are permitted to be on the oval during the horse events. The oval is strictly for mounted competitors, a strapper leading a horse, judges and nominated stewards/helpers only. This includes the show jumping area, except when competitors are walking the course. No unsupervised children are to be on the oval at any time. This rule will be enforced. Riders entering and exiting the oval must do so at a walk and ensure that they do not enter any area where judging is taking place.

Measure

- Horses to be presented in bridle and bit for measuring. Where height is stipulated, the exhibit must be measured each year by a CASS or EA appointed measurer. EA Life Measurement certificates are no longer accepted. The judge of a class may request any exhibit be measured in the presence of the chief steward in charge of the arena.
- The height then decided upon by the chief steward shall be final. When measuring, an allowance of 3/8" is allowed for shoes. For any queries on measuring please contact the chief steward.

Tests and Swabbing for Drugs

- Tranquillising and/or stimulating is prohibited. The organising committee reserves the right to swab test under EA rules. If a horse is under treatment at the time of the Show, a veterinary certificate must be shown to the chief steward at the time of the horse's first event.
- CASS and any servant or appointee of CASS shall not be liable to an exhibitor for the death of or injury, damage or infection to any horse tested for drugs.

Veterinary Regulations

- All horses from a tick infested area are to be treated and issued with a Waybill from Dept. Primary Industry and Fisheries, PO Box 8760, Alice Springs, NT, 0871. Ph: 08 8951 5211 before movement to the Alice Springs Show Grounds.

Stabling

- Stables are available at the Show Grounds on a first come, first served basis. Please book via email - show@alicespringsshow.com.au. Stables cost \$20 per day

Dressage

- Competition will be run under EA rules. Rules available online at www.equestrian.org.au.
- Timed draw will be emailed to all competitors.
- Competitors must ride to the order of the draw.
- Please advise the steward of any scratching, prior to start of competition.
- Riders must abide by dress and saddlery rules.
- Horses may only enter in two consecutive levels, e.g. Prep/Prelim.
- Horse & Rider combinations may only ride in a maximum of three tests on the day, and only two official classes
- No late entries will be accepted.
- Tests may be called in accordance with EA rules.
- Riders wishing to ride HC must indicate this on the entry form.
- Only horse/rider combination competing may use the warmup areas during the dressage competition.
- No lunging in the warmup area is permitted.

Show Jumping

- All events run and judged under Equestrian Australia (EA) rules.
- One horse / one rider.
- Horses can be ridden in a maximum of 3 classes per day, excluding Ride & Drive Class.
- Riders must wear approved helmet and boots to compete.
- Show attire expected.
- All classes are Open.
- Abuse towards horses or other riders will result in disqualification from the Show.
- Any bad language will result in elimination from the event.
- Please note that while every effort will be made to run to schedule, the organisers reserve the right to alter the program if requires due to unforeseen circumstances. In the event of a change to the program, every effort will be made to let the competitors know.

Lecl. Rider & Hunter/ Hack

- All horses to be presented in a bridle and bit. No headstalls or halters.
- EA affiliated.
- No rider is permitted to be mounted in any Show class unless wearing a helmet that conforms to the Equestrian Australia (EA) General Regulations with chin strap secured.
- Riders under 18 must wear safety helmet, jodhpurs or neat riding trousers, shirt, tie or stock short boots, no chappettes. Coats are optional.
- Adult riders must wear shirt, tie or stock, jodhpurs, or neat riding trousers, riding boots, and safety helmet. Service dress allowed. Blue jeans not permitted. Jackets must be worn for Smartest on Parade.
- Judge's decision is final.
- Novice rider or hack - must not have won a Champion Rider or Champion Hack at any Show, or a 1st place at a Royal Show. This does not apply to a Junior advancing to a Senior Competition.

Topsy Ring

- All horses to be presented in a bridle & bit.
- No Rider is permitted to be mounted in any Show class unless wearing an approved helmet.
- **Please ensure you have read the general rules and regulations**

Gymkhana

- All horses to be presented in a bridle & bit.
- Judges decision is final
- **Please ensure you have read the general rules and regulations**

- DROP OFF TIMETABLE -

Sunday 28th June

9am - 12pm

Art
Craft
Hobbies
Photography

Wednesday 1st July

Cattle | Before 4pm
Cooking | 1pm - 6pm
Poultry | 4 - 6pm

Thursday 2nd July

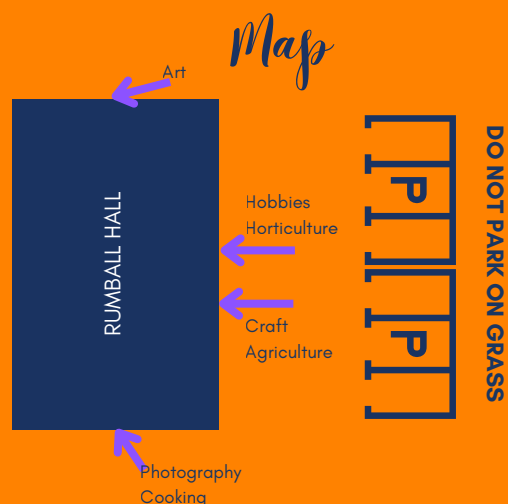
Horticulture | 9am - 12pm
Agriculture | 3pm - 6pm

Friday 3rd July

Pet Nursery | 8am - 9am

**- COLLECTION -
Sunday 5th July | 9am - 12pm**

All entries



How to enter competitions?

Simply head to www.alicespringsshow.com.au

Click **COMPETITIONS** | Login or Create an Account | Start entering your 2026 Entries

If you get stuck check out our handy "How To Videos" from the Competitions Menu

- IMPORTANT -

All Entries CLOSE Monday 22nd June - NO late entries accepted!

Please download & attach your Exhibitor Cards. You will find them in your Show account.

2026 THEME | BEYOND THE GATE

Celebrating the land, people, culture and creativity of the world's rangelands - with a Central Australian twist. Entries can reflect station life, regional and remote living, Indigenous knowledge, drought-resilient practices, rangeland landscapes, pastoral innovation and cultural food traditions, showcasing both local experiences and stories while reinforcing the resilience, resourcefulness and creativity of communities living on the land.